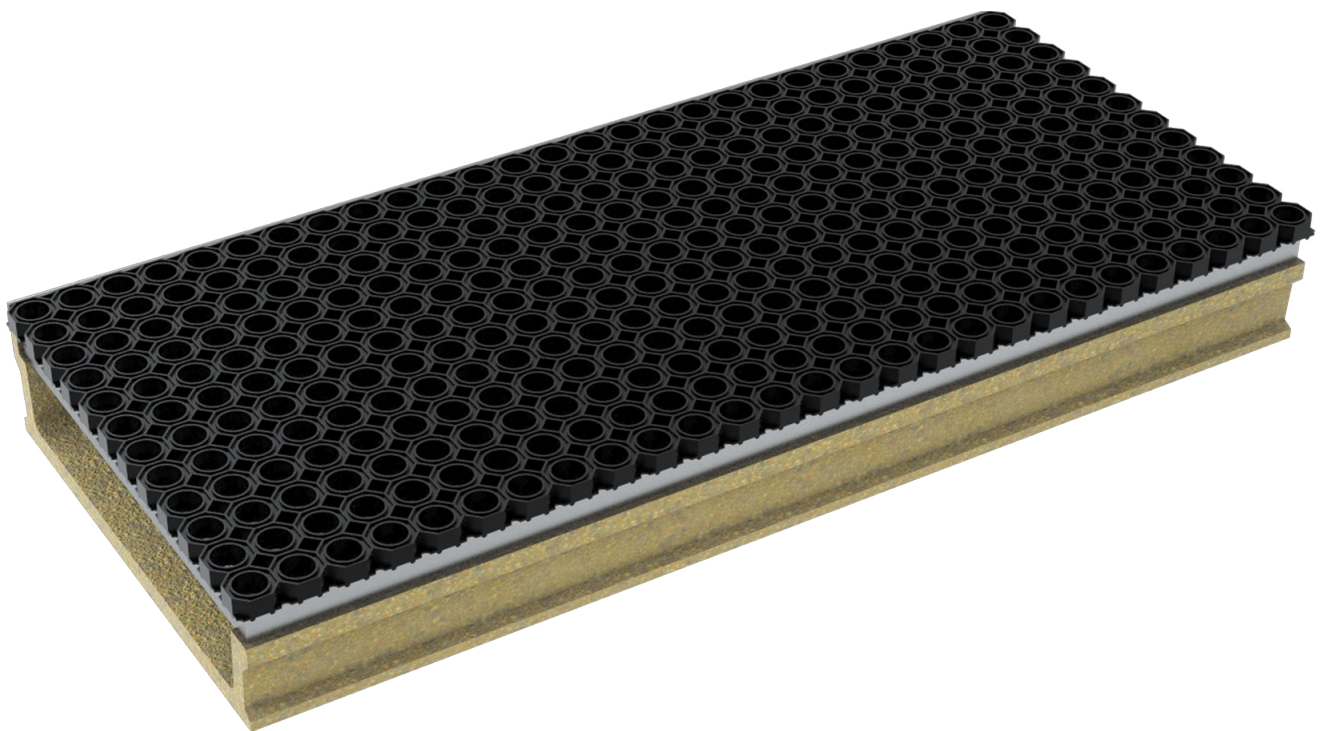


# ANRIN

LEADING WATER



## Technical data sheet

Sand collecting channel  
for collecting sand  
from long jump pits

# Technical data sheet

## ANRIN SPORT Sand collecting channel for collecting sand from long jump pits

The ANRIN SPORT sand collecting channel is comprised of a resin concrete tray with surrounding steel edge and a cover made of mesh steel grating with rubber honeycomb mat on top.

For the delimiting of the sand pit against synthetic coated auxiliary surfaces, we recommend installation in single or double rows. In doing so, excessive dirtying of the synthetic covering is prevented.

## Product specifications

Product specifications	Sand collecting channel	Length compensation	End cap
Material	Resin concrete	Resin concrete	Resin concrete
Length	100 cm	67.0 und 112.0 cm	
Width	50.0 cm	50.0 cm	50.0 cm
Height	14.0 cm	14.0 cm	14.0 cm
Weight	43.0 kg	48.0 kg	2.9 kg

## Material properties

Channel / component body	
Polymer concrete	polyester resin-based with mineral aggregates, additives
Compressive strength	≥ 90 N/mm <sup>2</sup>
Bending tensile strength	≥ 22 N/mm <sup>2</sup>
Modulus of elasticity	ca. 25 kN/mm <sup>2</sup>
Density	2.1 – 2.3 g/dm <sup>3</sup>
Heat resistance	100° C (Dauerbelastung)
Frost resistance	- 50° C
Water penetration depth	0 mm
Water absorption	0,05 %

# Technical data sheet

## ANRIN SPORT Sand collecting channel for collecting sand from long jump pits

### Areas of application

#### Areas of application

Sand collecting channel for collecting sand from long jump pits

### Sand collecting channel

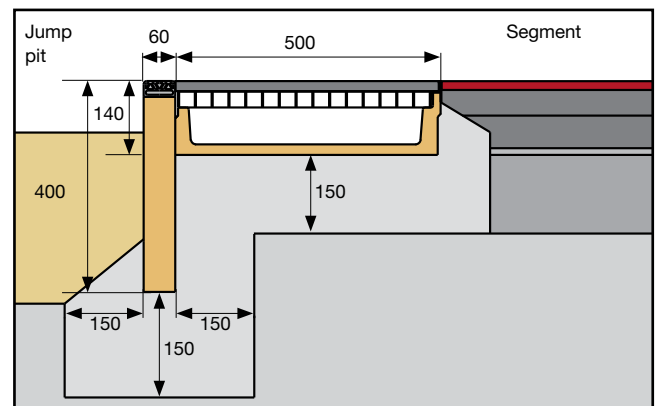
Article no.	EAN	Designation	Length cm	Width cm	Height cm	Weight kg
04571000	4026857005261	Sand trap channel, with steel edge, with rubber mat on steel grating	100	50.0	14.0	43.0
04572000	4026857005278	Length compensation, 112 cm	112	50.0	14.0	48.0
04571670	4026857013471	Length compensation, 67 cm	67	50.0	14.0	
04573000	4026857005285	End cap with steel edge		50.0	14.0	2.9

#### Installation plan and example installation

ANRIN is a competent and innovative partner for effective drainage engineering of sports grounds for more than 40 years. Pioneering systems, such as the screwless artificial turf jam, have been introduced and further developed by ANRIN. Arena drainage, track separation and edging of shotput or jump pits areas complete the ANRIN SPORT pro-duct range. All ANRIN SPORT components comply with IAAF regulations (International Amateur Athletic Federation) for tracks and playing fields as well as with DIN 18035 sports grounds, drainage.

Parts list:	
Soft edge block	
6 / 40 / 100	= 28 Stck.
6 / 40 / 50	= 4 Stck.
6 / 40 / Ecke	= 4 Stck.
Sand collecting channel	
100 / 50 / 14	= 23 Stck.
112 / 50 / 14	= 3 Stck.
End cap	= 4 Stck.

Installation plan  
for long jump pit edging  
based on a pit with  
dimensions of 9.00 x 7.00 m.





ANRIN GmbH  
Siemensstr. 1  
59609 Anröchte  
Germany

+49 (0) 29 47.97 81-0  
[www.anrin.com](http://www.anrin.com)  
[info@anrin.com](mailto:info@anrin.com)