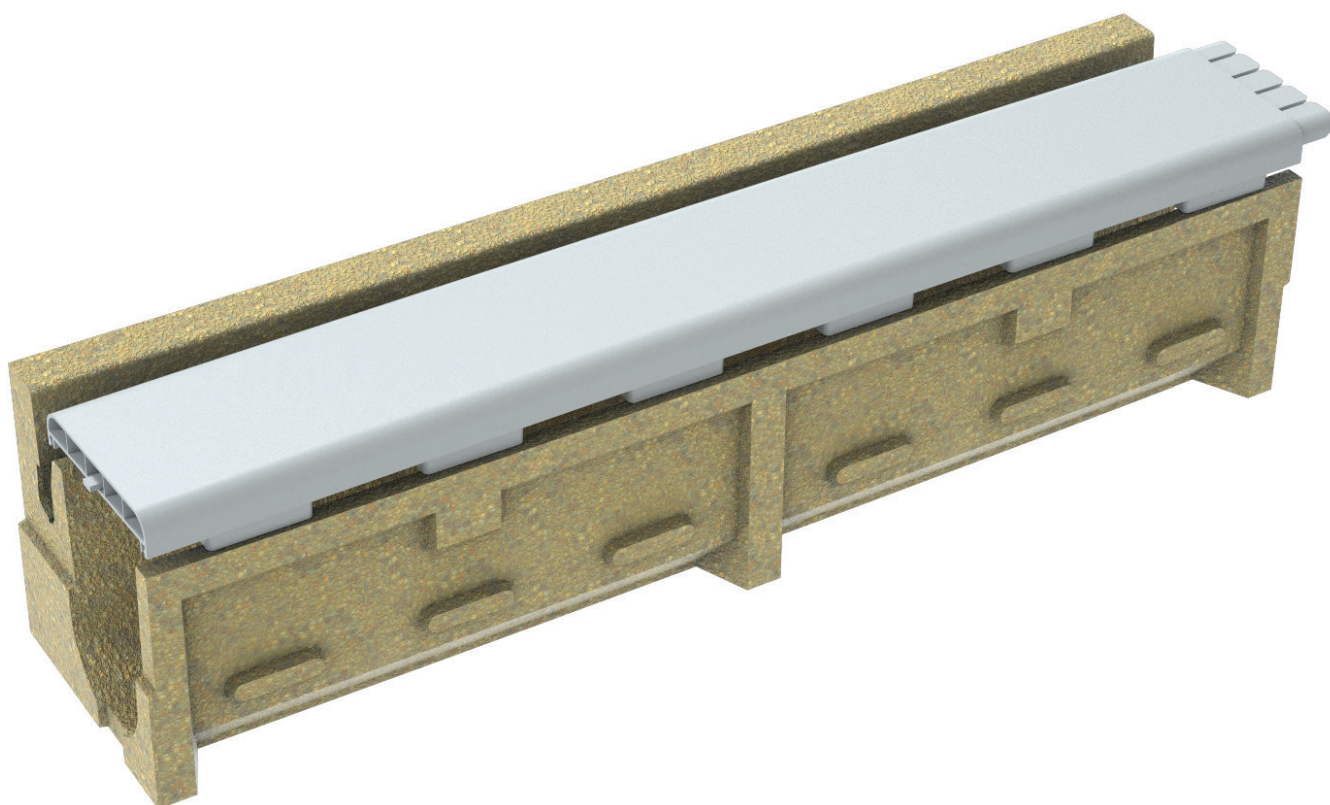


ANRIN

LEADING WATER



Technical data sheet

NW 125 synthetic turf
for synthetic turffields
in sports arenas

Technical data sheet

ANRIN SPORT drainage system NW 125 synthetic turf for synthetic turffields in sports arenas

The ANRIN SPORT drainage system NW 100 synthetic turf is the optimal solution of the drainage of all modern synthetic turf facilities. Two important functions are simultaneously addressed by one single component: the fastening of the synthetic turf and the drainage of the auxiliary surfaces. The screw-less clamping prevents damage to the covering material. By dispensing with metal parts on the surface, the greatest possible safety is assured for sports. The channel cross-section, without disruptive fastening parts of covers and locking mechanisms, facilitates cleaning and maintenance processes.

Product specifications

Product specifications	NW 125	Sump unit	Cover
Material	Resin concrete	Resin concrete	Plastic
Length	100 cm	50 cm	100 cm
Width	23.0 cm	23.0 cm	16.0 cm
Height	24.0 cm	62.5 cm	5.0 cm
Weight	27.1 kg	35.9 kg	

Material properties

Channel / component body	
Polymer concrete	polyester resin-based with mineral aggregates, additives
Compressive strength	≥ 90 N/mm ²
Bending tensile strength	≥ 22 N/mm ²
Modulus of elasticity	ca. 25 kN/mm ²
Density	2.1 – 2.3 g/dm ³
Heat resistance	100° C (permanent loading)
Frost resistance	- 50° C
Water penetration depth	0 mm
Water absorption	0,05 %
Cover	
Cover	Plastic

Technical data sheet

ANRIN SPORT drainage system NW 125 synthetic turf for synthetic turffields in sports arenas

Areas of application

Areas of application

for turf fields in sports arenas type A–D with raised field

Channels and accessories

Article no.	EAN	Designation	Length cm	Width cm	Height cm	Weight kg
04411000	4026857021094	Clamp channel NW 125, straight	100	23.0	24.0	27.1
04412000	4026857021100	Clamp channel NW 125, curved R = 36.5 m	100	23.0	24.0	27.1
04413000	4026857021117	Sump unit for clamp channel NW 125	50	23.0	62.5	35.9
04370000	4026857009290	Plastic cover PE-HD, white, straight, immovable	100	16.0	5.0	
04371000	4026857009306	Plastic cover PE-HD, white curved R = 36,5 m, immovable	100	16.0	5.0	

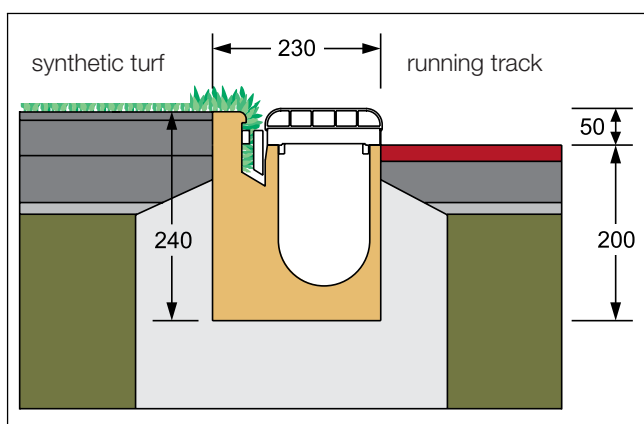
Example installations

ANRIN is a competent and innovative partner for effective drainage engineering of sports grounds for more than 40 years.

Pioneering systems, such as the screwless artificial turf jam, have been introduced and further developed by ANRIN.

Arena drainage, track separation and edging of shotput or jump pits areas complete the ANRIN SPORT product range. All ANRIN SPORT components comply with IAAF regulations (International Amateur Athletic Federation) for tracks and playing fields as well as with DIN 18035 sports grounds, drainage.

Example installation ANRIN SPORT NW 125 synthetic turf



ANRIN SPORT

Clamp Channel

NW 125 Synthetic Turf

l= 100 cm, w= 23 cm, h= 24 cm

for turf fields in sports arenas type A–D with raised field



ANRIN GmbH
Siemensstr. 1
59609 Anröchte
Germany

+49 (0) 29 47.97 81-0
www.anrin.com
info@anrin.com