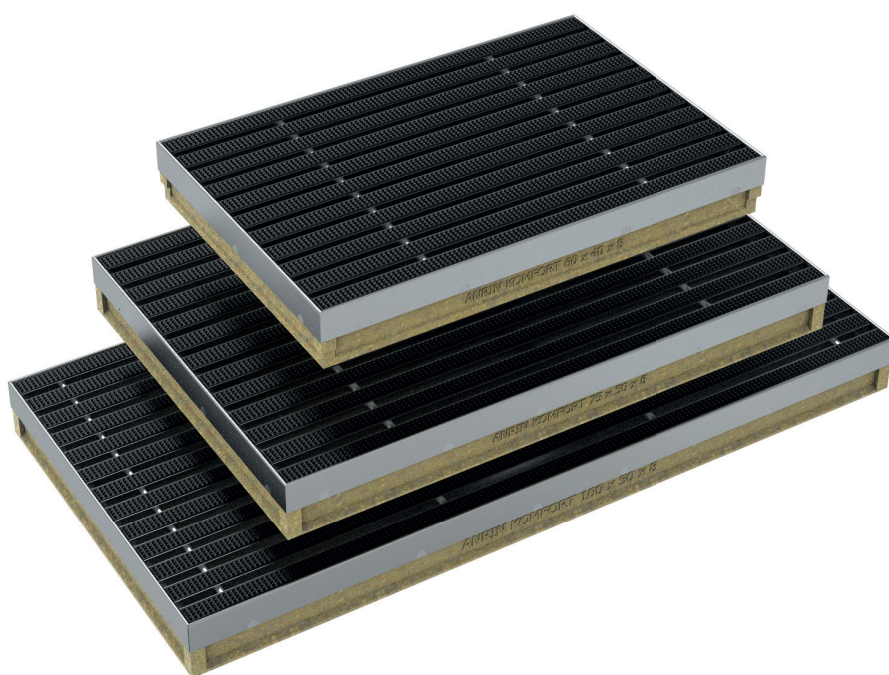


ANRIN

LEADING WATER



Technical data sheet

SELF
comfort boot scrapers

Technical data sheet

ANRIN SELF comfort boot scrapers

Product specifications

Product specifications	small	medium	large
Material	Resin concrete	Resin concrete	Resin concrete
Length	60 cm	75 cm	100 cm
Width	40 cm	50 cm	50 cm
Height	8 cm	8 cm	8 cm
Weight	11.7 kg	19.7 kg	22.9 kg
Drain	DA/OD 110	DA/OD 110	DA/OD 110
Edge type	Steel edge rail, 6 mm, galvanised	Steel edge rail, 6 mm, galvanised	Steel edge rail, 6 mm, galvanised
Cover gratings	Freely selectable	Freely selectable	Freely selectable

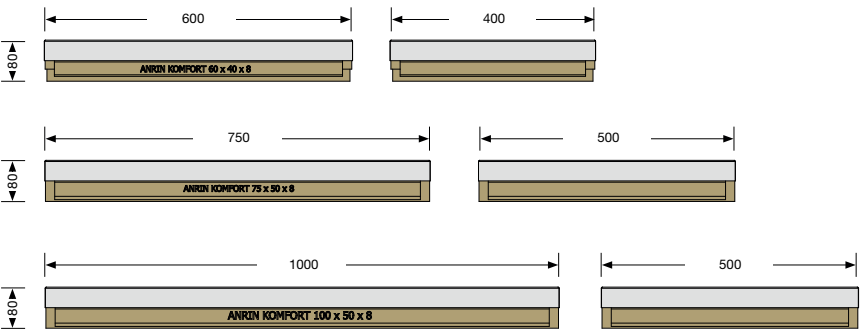
Material properties

Channel / component body	
Polymer concrete	polyester resin-based with mineral aggregates, additives
Compressive strength	$\geq 90 \text{ N/mm}^2$
Bending tensile strength	$\geq 22 \text{ N/mm}^2$
Modulus of elasticity	ca. 25 kN/mm^2
Density	$2.1 - 2.3 \text{ g/dm}^3$
Heat resistance	100° C (permanent loading)
Frost resistance	- 50° C
Water penetration depth	0 mm
Water absorption	0,05 %

Technical data sheet

ANRIN SELF comfort boot scrapers

Dimensions Scraper box



Scraper box

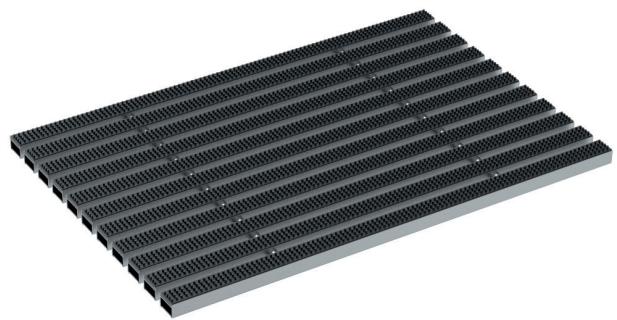
Article no.	EAN	Designation	Length cm	Width cm	Height cm	Weight kg
07020100	4026857007319	Scraper box 60 x 40 cm	60.0	40.0	8.0	11.7
07020200	4026857007326	Scraper box 75 x 50 cm	75.0	50.0	8.0	19.7
07020300	4026857007333	Scraper box 100 x 50 cm	100.0	50.0	8.0	22.9

Technical data sheet

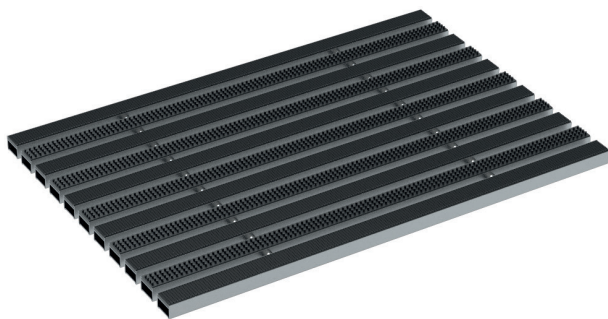
ANRIN SELF comfort boot scrapers



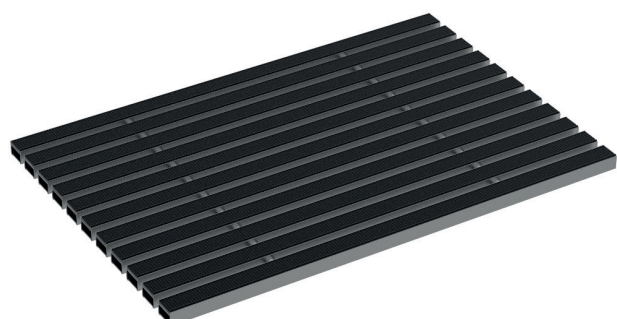
Aluminium grating
with needle-felt strips



Aluminium grating
with brush strips



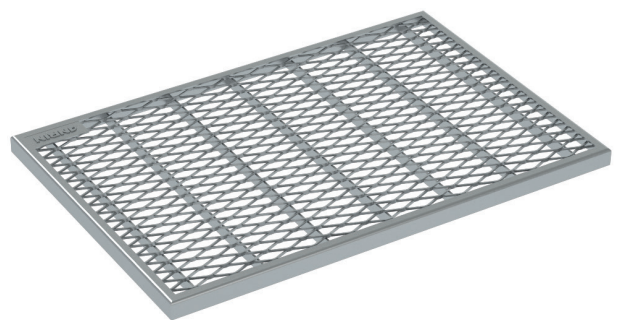
Aluminium grating
trimmed with brushes + rubber strips



Aluminium grating
with rubber strips



Mesh grating
galvanised steel mesh
width 9 x 30 mm



Diamond grating
galvanised steel

Technical data sheet

ANRIN SELF comfort boot scrapers

Cover gratings

Article no.	EAN	Designation	Length cm	Width cm	Height cm	Weight kg
07021100	4026857007340	Aluminium grating with needle-felt strips	60.0	40.0	2.0	2.5
07021200	4026857007371	Aluminium grating with needle-felt strips	75.0	50.0	2.0	4.0
07021300	4026857007401	Aluminium grating with needle-felt strips	100.0	50.0	2.0	5.4
07021110	4026857007357	Aluminium grating with rubber strips	60.0	40.0	2.0	2.5
07021210	4026857007388	Aluminium grating with rubber strips	75.0	50.0	2.0	4.0
07021310	4026857007418	Aluminium grating with rubber strips	100.0	50.0	2.0	5.4
07021150	4026857031727	Aluminium grating trimmed with brushes + rubber strips	60.0	40.0	2.0	2.9
07021250	4026857031734	Aluminium grating trimmed with brushes + rubber strips	75.0	50.0	2.0	4.7
07021350	4026857031741	Aluminium grating trimmed with brushes + rubber strips	100.0	50.0	2.0	6.4
07021160	4026857031758	Aluminium grating with brush strips	60.0	40.0	2.0	2.2
07021260	4026857031765	Aluminium grating with brush strips	75.0	50.0	2.0	3.5
07021360	4026857031772	Aluminium grating with brush strips	100.0	50.0	2.0	4.3
07021120	4026857008859	Mesh grating, galvanised steel	60.0	40.0	2.0	6.0
07021220	4026857010999	Mesh grating, galvanised steel	75.0	50.0	2.0	9.0
07021320	4026857008866	Mesh grating, galvanised steel	100.0	50.0	2.0	12.0
07021140	4026857009207	Diamond grating, galvanised steel	60.0	40.0	2.0	3.2
07021240	4026857009214	Diamond grating, galvanised steel	75.0	50.0	2.0	4.6
07021340	4026857009221	Diamond grating, galvanised steel	100.0	50.0	2.0	6.2

Technical data sheet

ANRIN SELF comfort boot scrapers

Installation instructions

The following installation guidelines are schematic representations. These are provided as examples and are non-binding. The information provided here is based on our long-term experience in excavation and road construction as well as the state-of-the-art technology.

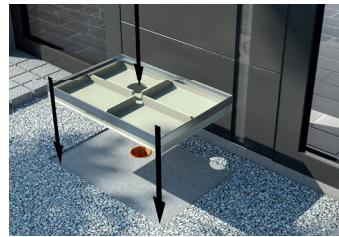
Despite this, designers and planners are always obligated to check the products and the installation instructions for their appropriateness. The example details are simplified recommendations for execution. Constructions are to be re-created on a project-specific basis.

Important: Insert gratings for the installation.

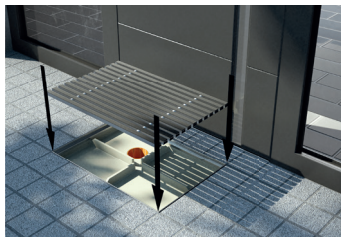
Installation instructions



1. Prepare the surface so that the top edge of the comfort boot scraper ends flush with the top edge of the finished ground surface. Integrate any pipelines to be connected.



2. Place the scraper box in the ground, on the concrete bed if possible, connect any necessary pipeline and align with the surface.



3. Fit the cover grating in place and install the surrounding surface structure.





ANRIN GmbH
Siemensstr. 1
59609 Anröchte
Germany

+49 (0) 29 47.97 81-0
www.anrin.com
info@anrin.com