

ANRIN

LEADING WATER



Technical
data sheet

SELF-100 SMART

Technical data sheet

ANRIN SELF-100 SMART

Product specifications

Product specifications	SELF-100 SMART	Sump unit
Material	Resin concrete	Resin concrete
Length	50 cm and 100 cm	50 cm
Width	12.2 cm	12.0 cm
Height	9.6 / 10.3 cm	39.6 / 40.3 cm
Weight	4.5 / 8.0 kg	15.5 kg
Nominal width	10 cm	10 cm
Slope type	Constant invert	Constant invert
Joint type	UNILINK® joint	UNILINK® joint
Fastening	Locking mechanism	Locking mechanism
Load capacity	Slotted grating HEELGUARD, galvanised steel, stainless steel, cl. A15; Mesh grating, galvanised steel, cl. B125; Longitudinal profile grating, stainless steel, cl. A15; Slotted grating OvalGrip, cast-iron, cl. B125; Slotted grating OvalGrip, plastic, cl. B125	
Cover gratings	Freely selectable	Freely selectable

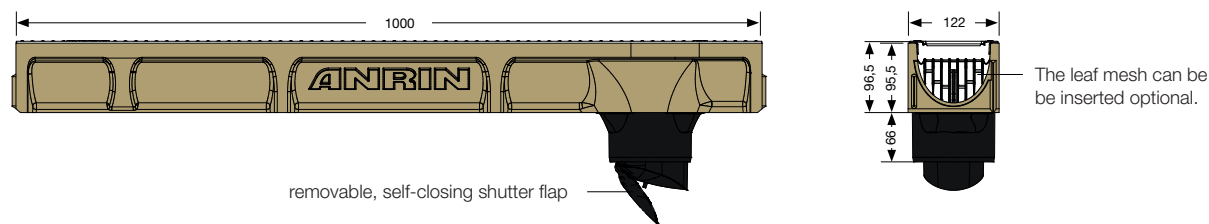
Material properties

Channel / component body	
Polymer concrete	polyester resin-based with mineral aggregates, additives
Compressive strength	≥ 90 N/mm ²
Bending tensile strength	≥ 22 N/mm ²
Modulus of elasticity	ca. 25 kN/mm ²
Density	2.1 – 2.3 g/dm ³
Heat resistance	100° C (permanent loading)
Frost resistance	- 50° C
Water penetration depth	0 mm
Water absorption	0.05 %
Channel cover	
Cover gratings	Slotted grating HEELGUARD, galvanised steel, stainless steel, cl. A15; Mesh grating, galvanised steel, cl. B125; Longitudinal profile grating, stainless steel, cl. A15; Slotted grating OvalGrip, cast-iron, cl. B125; Slotted grating OvalGrip, plastic, cl. B125

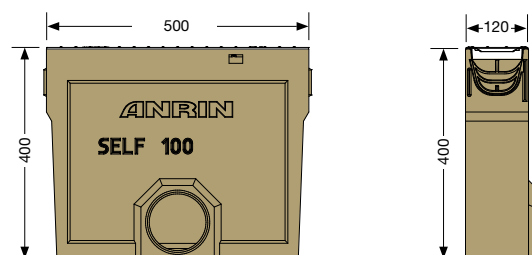
Technical data sheet

ANRIN SELF-100 SMART

Channel dimensions



Accessories dimensions



ANRIN Venturi-Socket with integrated shutter flap

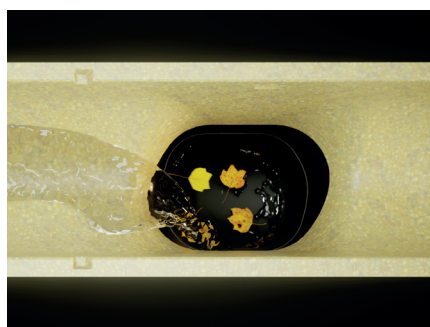
The Venturi-Socket combines several advantages compared to conventional pipe sockets:

1. faster drainage
2. self-cleaning effect
3. odour trap

In contrast to conventional pipe cylinders, the ANRIN Venturi-Socket is asymmetrical and funnel-shaped. Why? The funnel-like widening of the pipe socket and the smooth surface structure of the material ensure a harmonious transition from channel to pipe and the asymmetry of the cross-section creates a pronounced water vortex in the outflow. This significantly increases the flow velocity of the water to be drained.

This accelerated drainage also has the advantage that the channel lines are cleaned automatically. Small, stubborn dirt particles are carried away by the pronounced suction effect and the channel remains free of adhering foreign bodies for longer.

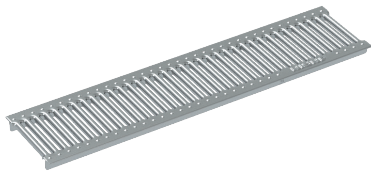
The standard pipe connection of the ANRIN SELF-100 channels.



Technical data sheet

ANRIN SELF-100 SMART

Cover gratings



Slotted grating HEELGUARD
galvanised steel / stainless steel
Length: 50 cm, 100 cm
Load capacity:
A15



Longitudinal profile grating
stainless steel
Length: 50 cm, 100 cm
Load capacity:
A15



Mesh grating
galvanised steel
Length: 50 cm, 100 cm
Load capacity:
B125



Slotted grating OvalGrip Design
cast-iron
Length: 50 cm
Load capacity:
B125



Slotted grating OvalGrip Design
plastic (black)
Length: 50 cm
Load capacity:
B125

Technical data sheet

ANRIN SELF-100 SMART

with galvanised grating HEELGUARD

Article no.	EAN	Designation	Length cm	Width cm	Height cm	Weight kg
07821000	4026857034216	SELF-100 Smart Channel 1,0 m with galvanised grating HEELGUARD	100	12,2	9,6	8,3
07821100	4026857034230	SELF-100 Smart Channel 1,0 m* with galvanised grating HEELGUARD with Venturi-Socket	100	12,2	9,6	8,4
07821050	4026857034223	SELF-100 Smart Channel 0,5 m** with galvanised grating HEELGUARD	50	12,2	9,6	4,4
07296200	4026857029946	SELF Smart Sump unit H40 with galvanised grating HEELGUARD with dirt bucket, connection DA/OD 110 with sealing ring	50	12,0	39,6	16,4

with stainless steel grating HEELGUARD

Article no.	EAN	Designation	Length cm	Width cm	Height cm	Weight kg
07824000	4026857034247	SELF-100 Smart Channel 1,0 m with stainless steel grating HEELGUARD	100	12,2	9,6	8,3
07824100	4026857034278	SELF-100 Smart Channel 1,0 m* with stainless steel grating HEELGUARD with Venturi-Socket	100	12,2	9,6	8,4
07824050	4026857034254	SELF-100 Smart Channel 0,5 m** with stainless steel grating HEELGUARD	50	12,2	9,6	4,4
07296500	4026857024026	SELF-100 Smart Sump unit H40 with stainless steel grating HEELGUARD with dirt bucket, connection DA/OD 110 with sealing ring	50	12,0	39,6	16,4

with stainless steel longitudinal profile grating

Article no.	EAN	Designation	Length cm	Width cm	Height cm	Weight kg
07891000	4026857034285	SELF-100 Smart Channel 1,0 m with stainless steel longitudinal profile grating	100	12,2	9,6	9,9
07891100	4026857034292	SELF-100 Smart Channel 1,0 m* with stainless steel longitudinal profile grating with Venturi-Socket	100	12,2	9,6	10,0
07891050	4026857034308	SELF-100 Smart Channel 0,5 m** with stainless steel longitudinal profile grating	50	12,2	9,6	5,1
07796000	4026857031932	SELF-100 Smart Sump unit H40 with stainless steel longitudinal profile grating with dirt bucket, connection DA/OD 110 with sealing ring	50	12,0	39,6	17,2

with galvanised mesh grating

Article no.	EAN	Designation	Length cm	Width cm	Height cm	Weight kg
07861000	4026857034315	SELF-100 Smart Channel 1,0 m with galvanised mesh grating	100	12,2	9,6	9,9
07861100	4026857034322	SELF-100 Smart Channel 1,0 m* with galvanised mesh grating with Venturi-Socket	100	12,2	9,6	10,0
07861050	4026857034339	SELF-100 Smart Channel 0,5 m** with galvanised mesh grating	50	12,2	9,6	5,1
07696000	4026857030591	SELF-100 Smart Sump unit H40 with galvanised mesh grating with dirt bucket, connection DA/OD 110 with sealing ring	50	12,0	39,6	17,2

* Channel 1.0 m with cast-in Venturi-Socket

** Channel 0.5 m with lateral preforming for corner, T and cross connections

Technical data sheet

ANRIN SELF-100 Smart

with slotted cast iron OvalGrip

Article no.	EAN	Designation	Length cm	Width cm	Height cm	Weight kg
07831000	4026857034346	SELF-100 Smart Channel 1,0 m with slotted cast iron OvalGrip	100	12,2	10,1	12,3
07831100	4026857034353	SELF-100 Smart Channel 1,0 m* with slotted cast iron OvalGrip with Venturi-Socket	100	12,2	10,1	12,4
07831050	4026857034360	SELF-100 Smart Channel 0,5 m** with slotted cast iron OvalGrip	50	12,2	10,1	6,4
07296300	4026857029977	SELF-100 Smart Sump unit H40 with slotted cast iron OvalGrip with dirt bucket, connection DA/OD 110 with sealing ring	50	12,0	40,1	18,4

with slotted plastic grating OvalGrip

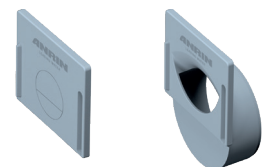
Article no.	EAN	Designation	Length cm	Width cm	Height cm	Weight kg
07851000	4026857034377	SELF-100 Smart Channel 1,0 m with slotted plastic grating OvalGrip	100	12,2	10,3	8,1
07851100	4026857034384	SELF-100 Smart Channel 1,0 m* with slotted plastic grating OvalGrip with Venturi-Socket	100	12,2	10,3	8,2
07851050	4026857034391	SELF-100 Smart Channel 0,5 m** with slotted plastic grating OvalGrip	50	12,2	10,3	4,2
07596000	4026857026426	SELF-100 Smart Sump unit H40 with slotted plastic grating OvalGrip with dirt bucket, connection DA/OD 110 with sealing ring	50	12,0	40,3	16,3

* Channel 1.0 m with cast-in Venturi-Socket

** Channel 0.5 m with lateral preforming for corner, T and cross connections

SELF-100 Smart Accessories

Article no.	EAN	Designation	Weight kg
07297200	4026857033714	SELF-100 End cap PP made of polypropylen	0,4
07298200	4026857033721	SELF-100 End cap PP made of polypropylen with pipe socket DA/OD 110	0,8
07809000	4026857034599	SELF-100 Smart leaf mesh made of polypropylen	0,1



Technical data sheet

ANRIN SELF drainage channels

Installation instructions

The following installation guidelines are schematic representations. These are provided as examples and are non-binding. The information provided here is based on our long-term experience in excavation and road construction as well as the state-of-the-art technology.

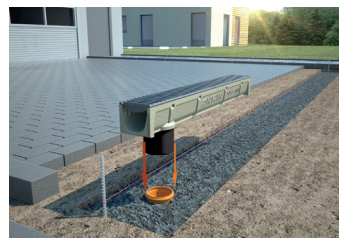
Despite this, designers and planners are always obligated to check the products and the installation instructions for their appropriateness. The example details are simplified recommendations for execution. Constructions are to be re-created on a project-specific basis.

Important: Insert gratings for the installation.

Installation instructions



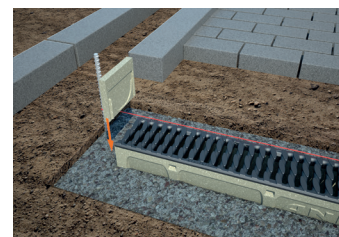
1. Excavate trench. Fill in and pre-compact base course. Apply concrete pad, 3 parts sand + 1 part cement + 1 part water, to base course.



2. Connect pipe connections to the pipeline.



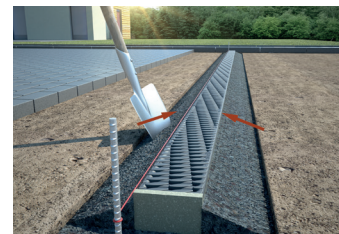
3. Place channel elements and sump unit on the concrete pad. Align components so that they are level.



4. Position end caps.



5. Complete the series and ensure the level alignment of the components.



6. Backfill the concrete pad.



7. Lay the paving.



8. The surface should be 2 to 5 mm higher than the cover grating.



ANRIN GmbH
Siemensstr. 1
59609 Anröchte
Germany

+49 (0) 29 47.97 81-0
www.anrin.com
info@anrin.com