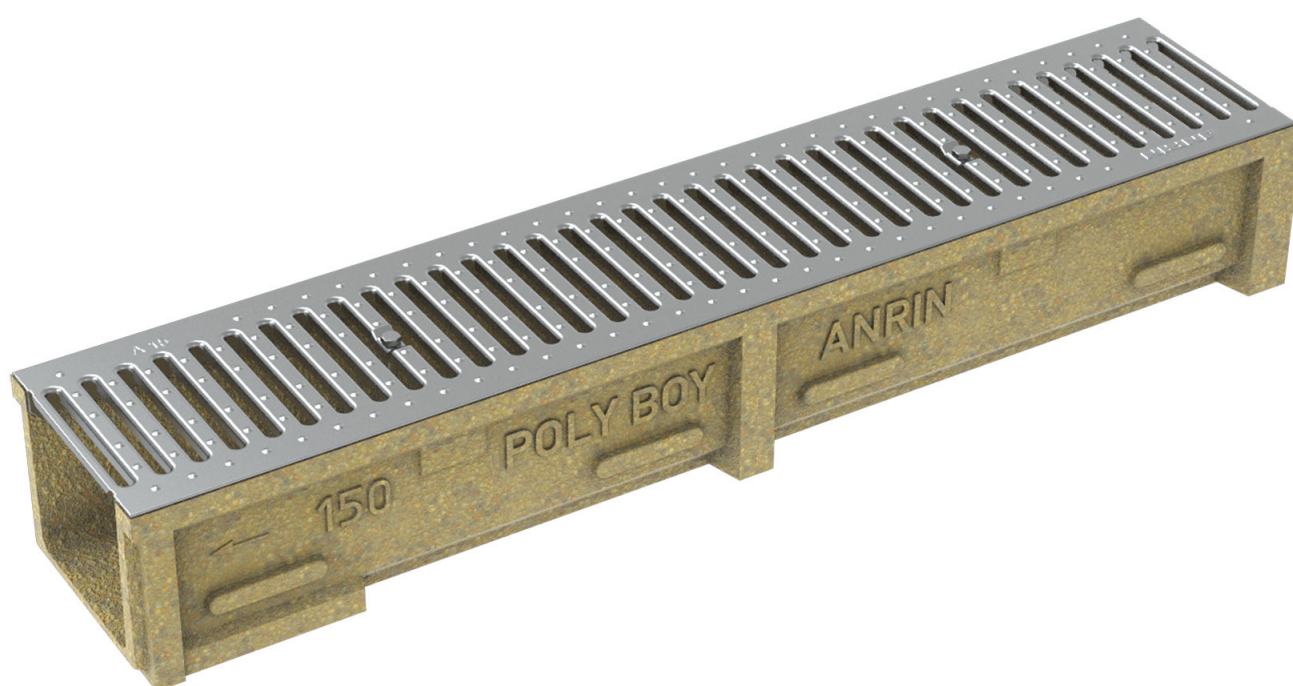


ANRIN

LEADING WATER



Technical
data sheet

SELF-150

Technical data sheet

ANRIN SELF drainage channels SELF-150

Product specifications

Produktspezifikationen		SELF-150
Material	Resin concrete	
Length	50 cm and 100 cm	
Width	20 cm	
Height	15 cm and 8 cm	
Weight	9.0 - 17.8 kg	
Nominal width	150 mm	
Slope type	Constant invert	
Joint type	UNILINK® joint	
Fastening	Screw fastening	
Load capacity	Galvanised grating cl. A15, mesh grating suitable for car access, cast iron grating cl. C250	
Cover gratings	Freely selectable	

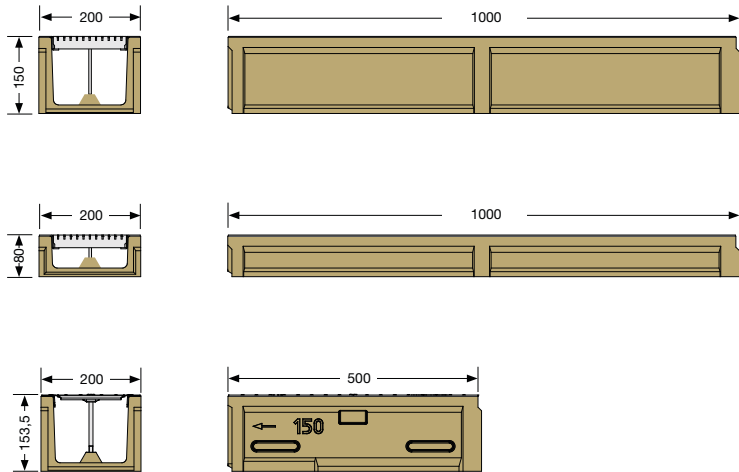
Material properties

Channel / component body	
Polymer concrete	polyester resin-based with mineral aggregates, additives
Compressive strength	$\geq 90 \text{ N/mm}^2$
Bending tensile strength	$\geq 22 \text{ N/mm}^2$
Modulus of elasticity	ca. 25 kN/mm^2
Density	$2.1 - 2.3 \text{ g/dm}^3$
Heat resistance	100° C (permanent loading)
Frost resistance	- 50° C
Water penetration depth	0 mm
Water absorption	0.05 %
Channel cover	
Cover gratings	Galvanised grating cl. A15, mesh grating suitable for car access, cast iron grating cl. C250

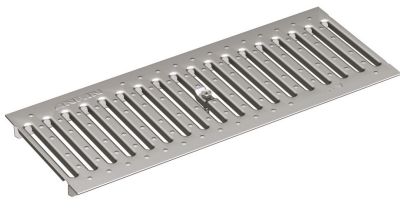
Technical data sheet

ANRIN SELF drainage channels SELF-150

Channel dimensions



Cover gratings



Slotted steel grating
galvanised steel
Length: 50 cm, 100 cm
Load capacity:
A15



Mesh grating
galvanised steel
Length: 50 cm, 100 cm
Load capacity:
B125



Slotted grating OvalGrip Design
cast-iron
Length: 50 cm
Load capacity:
C250

Technical data sheet

ANRIN SELF drainage channels SELF-150

Channel types

Article no.	EAN	Designation	Length cm	Width cm	Height cm	Weight kg
07310000	4026857027232	SELF-150 Channel, with galvanised grating, locked*	100	20.0	15.0	17.8
07310050	4026857027249	SELF-150 Channel with galvanised grating, locked*	50	20.0	15.0	9.0
07313000	4026857027256	SELF-150P Channel with galvanised grating, locked*	100	20.0	8.0	16.0
07311000	4026857020776	SELF-150 Channel with galvanised mesh grating, locked*	100	20.0	15.0	17.8
07311050	4026857020790	SELF-150 Channel with galvanised mesh grating, locked*	50	20.0	15.0	9.0
07314000	4026857020608	SELF-150P Channel with galvanised mesh grating, locked*	100	20.0	8.0	16.0
07312000	4026857027423	SELF-150 Channel with slotted cast iron, locked*	100	20.0	15.0	17.8
07312050	4026857027430	SELF-150 Channel with slotted cast iron, locked*	50	20.0	15.0	9.0
07314100	4026857027447	SELF-150P Channel with slotted cast iron, locked*	100	20.0	8.0	16.0

* Perforation DA/OD 110 for vertical outlet

Accessories

Article no.	EAN	Designation	Length cm	Width cm	Height cm	Weight kg
07315000	4026857027263	SELF-150 Sump unit with galvanised grating, locked	50	20.0	58.5	25.0
07316000	4026857020820	SELF-150 Sump unit with galvanised mesh grating, locked	50	20.0	58.5	25.0
07317000	4026857027416	SELF-150 Sump unit with slotted cast iron, locked	50	20.0	58.5	25.0
07317100	4026857020844	End cap SELF-150 for start/for start of channel				0.5
07318100	4026857020851	End cap SELF-150 with pipe socket DA/OD 160, for end of channel				1.0
01006610	4026857000532	Foul air trap DA/OD 160				1.5
01006810	4026857000556	Pipe socket DA/OD 160				0.2

Technical data sheet

ANRIN SELF drainage channels

Installation instructions

The following installation guidelines are schematic representations. These are provided as examples and are non-binding. The information provided here is based on our long-term experience in excavation and road construction as well as the state-of-the-art technology.

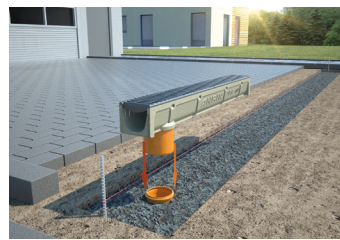
Despite this, designers and planners are always obligated to check the products and the installation instructions for their appropriateness. The example details are simplified recommendations for execution. Constructions are to be re-created on a project-specific basis.

Important: Insert gratings for the installation.

Installation instructions



1. Excavate trench. Fill in and pre-compact base course. Apply concrete pad, 3 parts sand + 1 part cement + 1 part water, to base course.



2. Connect pipe connections to the pipeline.



3. Place channel elements and sump unit on the concrete pad. Align components so that they are level.



4. Position end caps.



5. Complete the series and ensure the level alignment of the components.



6. Backfill the concrete pad.



7. Lay the paving.



8. The surface should be 2 to 5 mm higher than the cover grating.



ANRIN GmbH
Siemensstr. 1
59609 Anröchte
Germany

+49 (0) 29 47.97 81-0
www.anrin.com
info@anrin.com